

RotaCol® - Ecoline Speedconnect
'SPI' Interface Precision Digital Contactless Rotary Position Sensors
Bush Mounting - Sleeve bearing

Series 25P RSB
Series 30P RSB



with cable gland

with connector

25 mm & 30 mm Ø plastic robust housing - Bush mounting

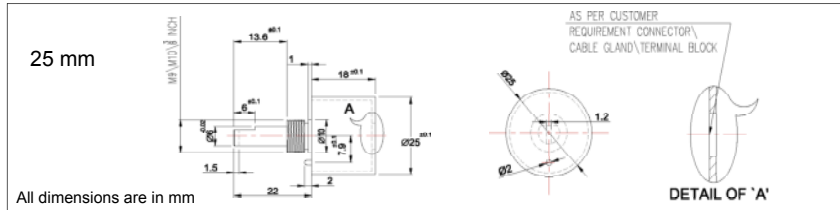
SPI - 3 wire - half duplex or 4 wire - full duplex

Direct SPI interface to microcontroller

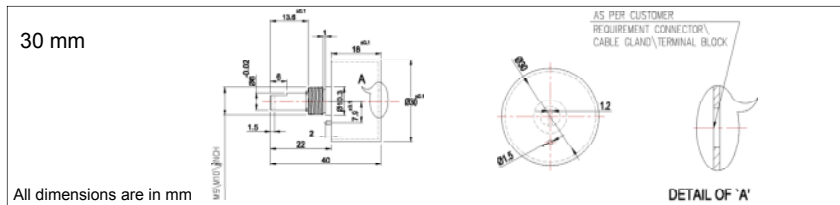
Following interconnections are available :

Round cable, Cable gland, miniature connector and terminal block

- 1-Supply (Red) 2-Ground (Black) 3-MOSI / MISO (Brown) 4-Clock (Orange) 5-Chip select (Yellow) : For 3 wire SPI - for OCG/OCR
- 1-Supply 2-Ground 3-MOSI/ MISO 4-Clock 5-Chip select : For 3 wire SPI - for OCM/OCTA/OCTR
- 1-Supply (Red) 2-Ground (Black) 3- Clock(Orange) 4- MOSI (Blue) 5- MOSI (Brown) 6-Chip select(Yellow) : For 4 wire SPI - for OCG/OCR
- 1-Supply 2-Ground 3- Clock 4 -MOSI 5 -MISO 6 -Chip select : For 4 wire SPI - For OCM/OCTA/OCTR



All dimensions are in mm



All dimensions are in mm

ELECTRICAL CHARACTERISTICS

Electrical angle	0 - 360°	
Electrical speed (Max.)	800 rpm	
Resolution	14 bit (16383 steps)	
Signal type	Supply voltage	Output signal
S05SPI	5V±10%	5V SPI - 3 wire
SE05SPI	5V±10%	5V SPI - 4 wire
SE33SPI	3.3V±10%	3.3V SPI - 4 wire
S05SPI2C	5V±10%	2 channel 5V SPI - 3 wire
Frequency response	5 KHz	
Supply current	< 30 mA	
Update rate	0.6 ms	

MECHANICAL CHARACTERISTICS

Mechanical angle	(O) 360° without stop (S) 320° +5° / - 0° with stop
Mechanical speed (Max.)	800 rpm (brass), 3000 rpm (polymer bearing)
Shaft diameter x length (FMS)	6 mm or 1/4 inch Ø X 22 mm
Life: with brass sleeve bearings	~15 million rotations
Life: with polymer sleeve bearings	~20 million rotations
End stopper strength	< 80 Ncm
Operating temperature	- 40 ... +85 °C
Operating torque	0.3 to 0.5 Ncm(Low) 0.5 to 1 Ncm (Medium)
Vibration (IEC 68-2-6, Test Fc)	±1.5 mm / 20g / 2000Hz / 16cycles
Mechanical shock (IEC 68-2-7, Test Ea)	50g /11ms /half sine (3X6 shocks)
Weight (25PRSB) - (gm)	60 (OCR), 70 (OCG), 30 (OCTA/R), 36 (OCM)
Weight (30PRSB) - (gm)	65 (OCR), 76 (OCG), 35 (OCTA/R), 45 (OCM)

MATERIAL

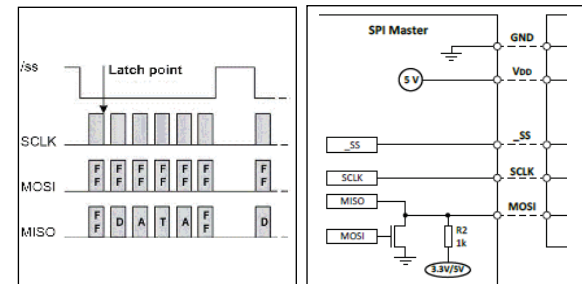
Bushing	Brass
Bearing standard	Brass bearing
Bearing type: option P	Polymer sleeve bearing
Housing	Nylon 66 Glass Fibre reinforced
Shaft	Stainless steel

For full range of Rotary Sensors refer -
www.rotacol.info/rotamec.pdf

FUNCTION PRINCIPLE

The angular position and the signal generation is detected by a CMOS Hall sensor over which a parallel diametrically polarized magnet induces a magnetic field. An integrated electronic provides the output of a 2 byte WORD with an SPI interface.

SERIAL PERIPHERAL INTERFACE



The serial peripheral interface (SPI) is a bus system for a serial synchronous data transmission between different integrated circuits.

A) For 3 wire SPI - The bus consists of 3 lines MOSI / MISO (one common line), SCLK - (Serial Clock, output from master) and SS Slave Select (active low; output from master).

B) For 4 wire SPI - The bus consists of 4 lines MOSI (Master Out Slave In), MISO (Master In Slave Out), SCLK - (Serial Clock, output from master) and SS Slave Select (active low; output from master).

By these signal lines the master selects the slave for communication. This is done because the master sets the SS line from high to low. The angular informations are calculated all 350 µs and are available for the master on demand. There is no fixed protocol for the SPI bus. Nevertheless many microcontroller IC's have a SPI input. By programming this microcontroller IC many SPI suitable sensors can be managed by one microcontroller. Two channel redundant outputs can be provided.

Default Version :

Bush mount, SPI interface, 360° Electrical & Mechanical angle, Low or medium Torque

ORDERING INFORMATION

xx	P	RS	Bx	SxxSPI	S14	O360 / Sxxx	CW / CCW	POZ	xT	P	D	Axx	CVxx	OXxx
25 / 30	P	RS	B1 B2 B3	S05SPI SE05SPI SE33SPI S05PI2C	S14	O360	CW CCW	POX POZ	LT MT HT	P	D	Axx	CVxx	OCxx OCG OCM OCR OCTA OCTR

Refer to electrical & mechanical options on page 2

Example with description - **30P RSB3 S05SPI S14 O360 CW POZ LT A25 OCTA** - 30 mm housing, SPI output, Ecoline RotaCol Speedconnect, Bush mounting - Thread 3/8" X 32 UNEF- shaft 1/4", 5V SPI output - 3 wire, 14 bit, 360° clockwise, zero point, Low torque , special shaft length 25 mm, 5 pin terminal block axial

Please note: The specification and information in this datasheet cannot consider all special demands that are caused by the application. Because of this, they are no general description of the properties of the product. Megacraft does not assume any responsibility for damages due to improper application of our products. The user has to ensure on his own, that the products used are suitable for his application. Megacraft does not warrant the reproducibility of published information. The specifications can be changed any time without notice.

ELECTRICAL OPTIONS FOR SPI VERSION 25/30P RSB

RotaCol® are the latest development in rotational position sensors and contactless devices. Modern Hall IC's in combination with special magnets and RISC processors provide intelligent customizing of output signals and interfacing. Not only precision potentiometer but also optoelectronic incremental and absolute encoders are replaced. The RotaCol® series is divided into 3 groups : analog types with analog output (replacement for precision potentiometer), incremental output (replacement of optoelectronic encoders), absolute digital SPI and SSI interfaces. Because of wide variety of mechanical and electrical options it is possible to use them in almost any automation and control application where rotary angular sensing is required. Regardless of the wide variety of existing technical features, the price is relative low.

SPI Bus Interface The Serial Peripheral Interface bus or SPI bus is a synchronous serial data link standard developed by Motorola that operates in full duplex mode. One or more devices can communicate with one master. The length of the signal wire should not be longer than 0.5m. To bridge larger distances it is recommended to use the SSI interface. The digital signal in 2 byte Grey code transmits the angular position information through the data bus.

Direction of Rotation (CW / CCW)

The default direction of rotation is clockwise (CW) for 3 wire SPI. It is also possible to change the direction of turning to counter clockwise mode (CCW). The default direction of rotation is counter clockwise (CCW) for 4 wire SPI. It is not possible to change the direction from counter clockwise (CCW) to clockwise (CW).

Zero Point Programming (POZ)

The electrical zero point is at the beginning of the signal rise. If a shaft marking is brought in line with the housing marking, the electrical zero point can be set to that position. In any case it is necessary to have a reference to the shaft marking.

2 Channel Redundant Output (2C) - Special type (only for 3 wire SPI)

2 Channel Output (2C) : The sensor provides 2 operating modes: A) Redundancy i.e. channel one and channel two are identical. If one channel fails the other channel remains active. B) It is also possible to have 2 different programs in the 2 channels. For this, additional functions can be obtained.

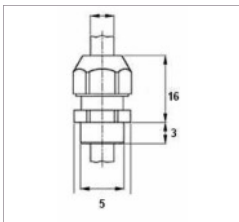
MECHANICAL OPTIONS FOR SPI VERSION 25/30P RSB

Type / Series	Standard mechanical options	Customized mechanical options
25/30P RSB	High torque (HT); Endstop at 90°, 180°, 270°, Mu metal cap, special cable length	Special shaft length; Special endstop angle

SPEEDCONNECT OUTPUT CONNECTIONS FOR SPI VERSION 25/30P RSB

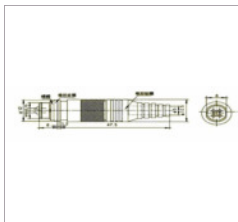
Cable gland (OCG)

5 core (3 wire SPI)
6 core (4 wire SPI)
(Round cable 1m long)



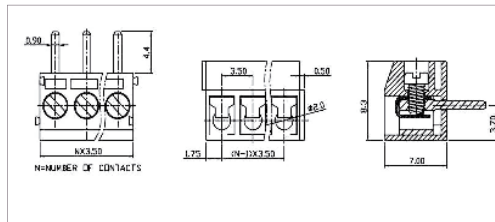
Miniature connector (OCM)

5 pin (3 wire SPI)
6 pin (4 wire SPI)
In integrated socket with plug



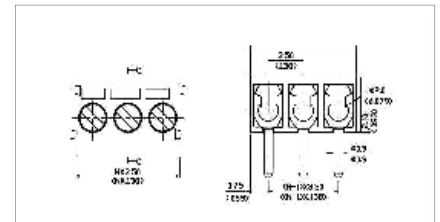
Terminal block - Axial (OCTA) Wires leaving axial to shaft axis

5 sockets (3 wire SPI)
6 sockets (4 wire SPI)



Terminal block - Radial (OCTR) Wires leaving radial to shaft axis

5 sockets (3 wire SPI)
6 sockets (4 wire SPI)



MegAuto KG

Am Tummelsgrund 48
D 01156 Dresden, Germany
Tel : +49 351 6587894 0 Fax : +49 351 65878949
Email : info@megauto.de / www.megauto.de
Skype : megautodd / whats app: +491781244294

Sensall - MegAuto International

Div of Sendap Precision Electronics Pvt Ltd.
3, Electronic Sadan - I, MIDC, Bhosari, Pune - 411026, INDIA
Tel : +91 8669617194, +91 8669617195
Email : mail@megacraft.net / www.sensall.info
Skype: sendapimc / whats app: +91 8669617198

